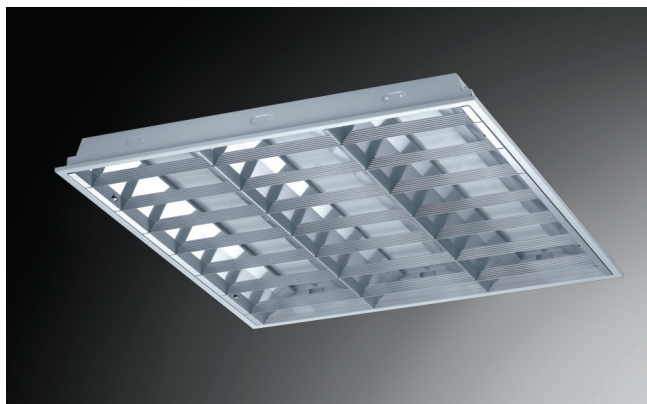
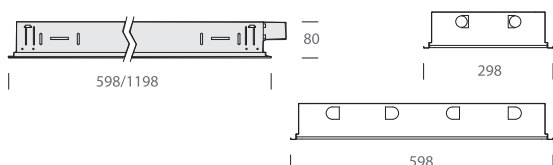


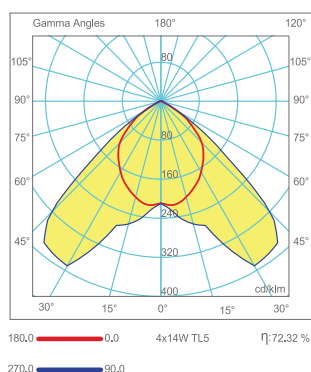
# T5 Standard Parabolic Luminaires



## Technical Drawing



## Light Distribution Curve



## Fields of Application



## Standards of Application



## Product Details

Order Code (Fluorescent)	Order Code (LED Tube)	Power (W)	Lamp Type	Power Factor	Dimensions (mm) a b c	Base	Pcs/Pack	Ballast Type Options
CST 010513	CST 010125	2x14/9	TL-D	>0.95	598x298x80	G5	2	Electronic
CST 010514	CST 010126	3x14/9	TL-D	>0.95	598x598x80	G5	2	Electronic
CST 010515	CST 010127	4x14/9	TL-D	>0.95	598x598x80	G5	2	Electronic
CST 010516	CST 010128	2x28/18	TL-D	>0.95	1198x298x80	G5	2	Electronic
CST 010517	CST 010129	3x28/18	TL-D	>0.95	1198x598x80	G5	2	Electronic
CST 010518	CST 010130	4x28/18	TL-D	>0.95	1198x598x80	G5	2	Electronic

## Mechanical Specifications

+ 0,50 mm thick metal frame with electrostatic powder coating. Stainless steel latches positioned to prevent falling of the framework. Ceiling tile compatible model including 4 extra brackets and screws for drywall ceiling installations

## Optical Specifications

+ "anodized aluminium reflector" maintaining its optical properties, non-yellowing and non-discolouring throughout lifetime of the luminaire. Anti-glare, highly reflective lamellae.

## Technical & Electrical Specifications

- Luminaires for fluorescent lamps T16 (T5) and LED Tube.
- Connection for operation on 220V-50/60Hz with electronic ballast (IT16, TC-SEL, TC-L).
- Connection for operation with electronic ballast dimmable (lamps T16, TC-SEL, TC-L).

## Options

- Connection for emergency lighting system .
- Mirror or Matt Reflector

## Practical Lighting Design Chart

